

The Amateur Trapshooting Association Presents

# APRIL 7-15, 2012

# 2012 SOUTHWESTERN GRAND Jeff Wagner \*PRESIDENT

**PAT TRAPS  
On All  
Program  
Fields**

**More Trophies  
Than Any  
Other Grand!**

**Satellite New ATA  
Including Categories**



5931 Roff Road

San Antonio, Texas 78253

210-688-3371

[www.nationalshootingcomplex.com](http://www.nationalshootingcomplex.com)

# Remington®

## GREAT CHAMPIONS THINK ALIKE.

**MORE CHAMPIONS SHOOT STS®  
THAN ANY OTHER BRAND.**



Premier® STS® Loads offer the most consistent shot to shot reliability. Available in 12, 20, 28 gauge, and 410 bore.

Designed for long yardage trapshooting and long-range sporting clays. Available in 12 gauge, 1 and 1 1/4 oz. loads.

**CONSISTENTLY THE WINNER'S CHOICE.** Absolute focus and consistency. Distinguishing traits of the world's best shooters, and their ammunition of choice. Remington® STS®. Produced with extremely tight tolerances, every round is the same crushing blend of pattern uniformity and light recoil. All housed in the most reloadable hull on the market. Lose yourself in the moment with STS, and find yourself alone at the top in no time. [www.remington.com/targetloads](http://www.remington.com/targetloads)

For more information contact John Bauer, Remington® Shooting Sports Manager at (336) 607-4360

# GENERAL INFORMATION

## NATIONAL SHOOTING COMPLEX

5931 ROFT ROAD SAN ANTONIO, TX 78253

210-688-3371(PHONE) 210-688-9269 (FAX)

[www.nationalshootingcomplex.com](http://www.nationalshootingcomplex.com)

*FOR EMERGENCY... DIAL 911*

### **FIRE**

Geronimo Volunteer Fire Dept.....210-679-7213

Bexar County Fire Dept.....210-838-3939

### **POLICE**

Bexar County Sheriff's Dept.....210-335-6000

### **MEDICAL**

Ambulance.....210-207-7744

Texas Med Clinic (Loop 410/Ingram).....210-520-5588

Christus Santa Rosa (Westover Hills).....210-706-8400

Medical Center Hospital.....210-616-4000

### **CAR RENTAL**

National Car Rental.....210-824-1841

Enterprise Rent-a-Car.....210-520-2897

Yellow Cab.....210-222-2222

### **LOCK SERVICE**

Alert Locksmith.....210-523-5577

Pop-A-Lock.....210-523-5577

### **RV SERVICE**

Wagner RV - All types of services.....210-679-6610

Tejas Valley RV Park - Propane.....210-679-9715

### **ANIMAL CARE**

Mercy Animal Critical Care.....210-684-2105



# NATIONAL SHOOTING COMPLEX

## OPEN PUBLIC SHOOTING

### THURSDAYS & SATURDAYS

9AM - 9PM

9AM - 5PM

TRAP • SKEET • SPORTING CLAYS • 5-STAND • BUNKER TRAP

#### WE ALSO OFFER THE FOLLOWING:

CORPORATE EVENTS  
CHARITY FUNDRAISERS

COMPANY PICNICS  
PARTIES

#### FOR MORE INFO CONTACT:

ROYCE GRAFF  
210-688-3371 x113  
rgraft@nssa-nasca.com

AMBER SCHWARZ  
210-688-3371 x125  
aschwarz@nssa-nasca.com

Main Office: 210-688-3371

Pro Shop: 210-688-2542 (after 5pm & Saturdays)

Fax: 210-688-9269

5931 Raft Road

San Antonio, TX 78253

[www.nationalshootingcomplex.com](http://www.nationalshootingcomplex.com)

Enjoy a day with friends, make new friends, or just come out and have some fun shooting at the National Shooting Complex.



# WELCOME TO THE 33<sup>rd</sup> ANNUAL SOUTHWESTERN GRAND AMERICAN

★ **PAT TRAPS ON ALL PROGRAM FIELDS** ★

## SWG WARM-UP • APRIL 7-8

- 1) These events will start 9 am, Saturday, April 7. Registration will open at 8 am.
  - a) Practice will open 8 am, Saturday, April 7 until 5 PM.
  - b) These events are separate from the Southwestern Grand American events.
  - c) You **will** be able to sign-up for any and all of the main events.

## SOUTHWESTERN GRAND AMERICAN

- 1) The Southwestern Grand American events will start 9 am, Monday, April 9.
  - a) The Handicap Desk will open Monday, April 9, 8 am-5 PM, as will the Registration Building. Registration hours will be 8 am-5 PM, Monday-Sunday.
  - b) Events 22-24, the All-Around, and Events 13-24, the High Over All, comprise the awards for the ATA Southwestern Grand.
- 2) Daily fees – ATA \$3.00: TTA \$3.25
- 3) All singles and handicap shoot-offs will be on a 25 target basis and doubles will be on ten pair.
- 4) **White Flyer Orange Dome targets will be thrown on the 24 program fields and 2 practice fields. All tournament fields will have voice release systems.**
- 5) There are no compulsory purses.
- 6) The use of paper entry cards has been eliminated. When you squad for a position in any event, that position is now electronically assigned to your ATA number. When you present your plastic ATA card at the cashier counter, the cashier will enter you into that assigned position for the events you wish to pay for. If you do not wish to enter an event that you have previously squadded for, you may release that position at any squadding or cashier window.
- 7) Squadding will be restricted to a maximum of 2 yards on a squad, 1 yard for 18-20 yard shooters.
- 8) Saturday, April 14, 6:30 - 9:30 PM there will be dinner, cocktails, music and dancing for all competitors compliments of **Winchester Ammunition**, and the **National Shooting Complex**.
- 9) The All-American Top Gun Shoot-out will be held Friday, April 13.  
(Must register in advance of this event to be eligible.)
- 10) **All program interpretations will be made by Officials of the ATA and/or the EC.**
- 11) Phillip Vasquez of the Central Handicap Committee will supervise Classification and Handicapping.
- 12) The High Wheelchair Shooter for each Championship Event and High All-Around will receive a trophy from the Paralyzed Veterans of America (PVA) for their accomplishments.

## 2012 PRESIDENT



**Jeff Wagner**  
**Central Zone**  
**Williston, ND**

Dear Shooters,

I hope that you will join me at the beautiful National Shooting Complex in sunny San Antonio Texas, April 7th through the 15th, 2012.

Michael Hampton Jr. and his staff are dedicated to making your visit to the National Shooting Complex a memorable one. If this is your first trip or you are a regular attendee you will not be disappointed in the facilities, the weather or simply enough a huge dose of that good old Texas style hospitality.

Why don't you bring your family along and spend a few extra days enjoying the historic Alamo, the River Walk or everyone's favorite, Sea World.

On behalf of the entire ATA Executive Committee we hope to see you in San Antonio, vying for valuable trophies, prizes and All American points, while you are there please stop any of us you might see in attendance; we would welcome the chance to meet with you.

Yours in sport,

A handwritten signature in black ink that reads "Jeff Wagner". The signature is fluid and cursive, with the first letters of "Jeff" and "Wagner" being significantly larger and more stylized.

Jeff Wagner

ATA President

## VICE PRESIDENTS



**Allan Radway**  
Western Zone  
Sundre, AB



**Terry Roush**  
Southern Zone  
Greensboro, NC



**Wayne D. Morris**  
Eastern Zone  
Charlestown, RI



**Rob Taylor**  
Southwestern Zone  
Manhattan, KS



**Gary Sherrod**  
Ex-Officio  
Lubbock, TX

## OTHER OFFICERS



**Thomas Burkey**  
Treasurer  
Chambersburg, PA



**Hunter H. Galloway III**  
Secretary  
Greensboro, NC

# PRE-SQUAD PROCEDURE

The National Shooting Complex is offering pre-squadding for the Southwestern Grand Warm-up and the Southwestern Grand, April 7-15, 2012.

## Pre Squadding available online @RJStuart.com

1. Request forms received before or including March 15 will be given equal priority and drawn at random. All request forms received after this date will be processed by received date. No request forms will be accepted after April 5.
2. The non-refundable service charge of \$2.00 per position, per event, must be included with your request form.
3. The use of paper entry cards has been eliminated. Please be sure to have your ATA plastic card when you are at the entry window. You will not be able to enter any events without your plastic card.
4. If you draw squad positions that will not be used for an event, please see squadding personnel or use the self-service terminals to release your position. Releasing your position allows us to fill holes in open squads, making this tournament more enjoyable for all shooters. A shooter may not draw more than one position per event.
5. You will directly input your entries, including options, at the cashier windows using a touch screen system. Upon paying your entry fees, you will be supplied with a receipt showing your squad and position along with your class/yardage, options if applicable and categories for each event entered. Once you leave the cashier window, your entry cannot be changed for options or squadding. **NSC will accept CASH or CHECK ONLY for shoot options – credit cards will be accepted for all other services.**
6. In an effort to avoid unused positions, it is imperative that you either cashier or release all positions that you have pre-squadded for prior to the event. Anyone that does not cashier or release positions that have been pre-squadded in their name will risk having any or all subsequent pre-squadded positions in their name released by Management. You may call the office 210-688-3371 X 125 if you cannot make it to the club in time and have your position released.
7. A shooter may only draw one position per event. Any shooters wishing to squad together must fill out only one application indicating the shooters full name, ATA number, and handicap yardage on the line indicating which position that shooter wishes to shoot. Applications for full or partial squads that do not have each shooter's information completely and properly filled out will not be honored. Multiple applications for any individual will be discarded and will not be refunded. Only the first application encountered will be processed.
8. Squadding will be restricted to a maximum of 2 yards on a squad, 1 yard for 18-20 yard shooters.
9. There will be a drawing made by the Management for bank assignments for each event. If you sign up after the bank assignments have been posted, you must take a position on the first available squad. There will be no exception to this rule.
10. Telephone requests will not be honored.

Please enclose check for the total amount of the service charge made payable to:

The National Shooting Complex.

Mail to NSC, Attn.: Royce Graff, 5931 Roft Road, San Antonio, TX 78253.



## 2012 Southwestern Grand American Pre-Squadding Form

Enter information for each shooter on the position line that he/she will shoot		Saturday 4/7			Sunday 4/8			Monday 4/9			Tuesday 4/10			Wednesday 4/11			Thursday 4/12			Friday 4/13			Sat 4/14	Sunday 4/15	
		1	2	3	4	5	6	7	8	9	10	11	12	13	14	15	16	17	18	19	20	21	22	23	24
Pos	ATA #	Name	Yds	Seg	Hcp	Dbl	Seg	Hcp	Dbl	Seg	Hcp	Dbl	Seg	Hcp	Dbl	Seg	Hcp	Dbl	Seg	Hcp	Dbl	Seg	Hcp	Dbl	Hcp
1				1	1	1	1	1	1	1	1	1	1	1	1	1	1	1	1	1	1	1	1	1	1
2				2	2	2	2	2	2	2	2	2	2	2	2	2	2	2	2	2	2	2	2	2	2
3				3	3	3	3	3	3	3	3	3	3	3	3	3	3	3	3	3	3	3	3	3	3
4				4	4	4	4	4	4	4	4	4	4	4	4	4	4	4	4	4	4	4	4	4	4
5				5	5	5	5	5	5	5	5	5	5	5	5	5	5	5	5	5	5	5	5	5	5
		Enter Time Request (E)arly (M)iddle (L)ate																							

Enter information for person submitting application

Name \_\_\_\_\_ ATA # \_\_\_\_\_

Address \_\_\_\_\_

City, State, Zip \_\_\_\_\_

Phone # \_\_\_\_\_

Please an "X" in the box representing the event(s) each shooter wished to be squadded for. If you wish to squad for all events, you may write the word "ALL" on the line for each shooter applicable.

**Applications that do not have each shooter's information completely and properly filled out will be rejected. Do not forget to include each shooter's yardage.**

Please submit a second form if your shooters wish to shoot a different post for handicap or doubles or if you will have different shooters shooting any posts for subsequent events.

# SHOOTER'S RESPONSIBILITY ENTRY AND SHOOTING PROCEDURE

- 1) Take your average card to the Handicap Table immediately upon arrival. Do not attempt to make your program entries before doing so.
- 2) Be sure your classification and handicap yardage are assigned and confirmed by a member of the Handicap Committee before you leave the table. It is your responsibility to know the rules. You are subject to penalties for shooting on wrong yardage or in wrong classification—even if your card is so marked. It shall be the shooters responsibility to inform the Handicap Table as to his or her eligibility.
- 3) If possible, please enter all events you plan to shoot for the week at the time of your initial entry. This will save time and make things more pleasant for all shooters.
- 4) Reloads will be permitted at this tournament.
- 5) No counter checks or second party checks will be accepted by the cashier. Checks will be accepted for the amount of shooting fees only—No exceptions. **NSC will accept CASH or CHECK ONLY for shoot options – credit cards will be accepted for all other services.** All entries must be made in U.S. funds.
- 6) Purses and options are not compulsory. All entries close at 2 pm Sunday, April 15. Pay-outs close at 5 pm Sunday, April 15.
- 7) Any shooter that wants to re-squad or misses his squad, etc. will be charged a \$20 re-squadding fee provided such instances are not managements fault. If you re-squad, you will be placed on the same bank as your original squad would have shot. No shooter will be allowed to make up more than 50 targets on the practice traps if he or she has missed their squad. If you are unable to join your squad before they have started their third sub-event, you must pay the \$20 re-squadding fee and be re-squadded. All make-ups for either missed squads or gun repairs report to the practice traps no later than 30 minutes of when the last squad takes the line for that event.
- 8) By entering the competition, every person agrees to accept all official decisions and to abide by ATA rules. Members are strongly encouraged to know the ATA Rules and abide by them, both for their own benefit and the benefit of other shooters.
- 9) Refund Policy: Only target and option money will be refunded prior to the day of the event.
- 10) Be ready to shoot. **SQUADS WILL NOT WAIT FOR TARDY MEMBERS.** If you miss your squad, report to Registration, pay a \$20 re-entry fee and be re-squadded on a later squad.
- 11) In case of gun breakdown, a shooter will be allowed five (5) minutes for repair or replacement.
- 12) **PLEASE CHECK YOUR SCORE AFTER FIRING AT EACH 5 TARGETS.** According to ATA rules, the scorekeeper must keep the score sheet in plain view of the shooters at all times. If shooters insist on this, many arguments will be avoided. The Squad Leader (No.1 shooter) will total the score after each sub-event and initial the score sheet before leaving the trap. Errors made in totaling may and shall be corrected whenever discovered.
- 13) It is the responsibility of ladies, sub-veterans, veterans, senior veterans, junior gold, juniors and sub-juniors to see that they are so indicated on their entry cards and on the bulletin sheets so that they may be included in the competition. Report any omission on the bulletin sheet to Registration. **All scores are final for purse and option calculation one hour after the last score is posted.**
- 14) All information needed to:
  - A. Award Trophies
  - B. Award Added Money
  - C. Make reports to the ATAare taken from the scoreboard sheets, so be sure all information is correct.

## Shells

A large supply of shells, in standard loads, will be for sale on the grounds at current standard prices.

### Please Note:

If you wish to save your shells for reloading, please transfer them from your gun to your pocket or pouch. Picking up shells from the ground is a nuisance to other shooters and will not be tolerated AT ANY TIME. All hulls that hit the ground are the property of the NSC.

### Practice/Ammunition Building/Shotgun Storage

The practice and Ammunition Building will be open on Saturday, April 7 from 8 am-5 pm and daily from 8 am until shoot-offs begin for the remainder of the shoot. Practice rounds are \$4.75 for 25 targets. Shotgun storage is available at the Ammo Building. The cost is \$5 per gun per day.

### Campers

Reservations are required for RV/Campers because of the increased demand. All campers must check in with RV Manager Site #41, upon arrival. Camp grounds open Wednesday, April 4. If you have any questions or desire a space, please call Sabena Monistere at 210.688.3371 ext 10.

### Rules and Regulations

- 1) Should you win or tie for high in class in any 16 yard or Doubles event or earn yardage in any Handicap event, it shall be your duty to report to the Handicap Desk and have your classification reviewed or yardage punched. Any shooter whose class or yardage is changed for any reason shall be considered to have been notified when the new class or yardage is posted on the bulletin board. Mandatory move up starts with Events #19 & #21.
- 2) Any shooter failing to carry out rule #1, or who shoots in a class or yardage higher or lower than that assigned by the Handicap Committee will be subject to penalty and will not be eligible to share in any money division or trophy whatsoever.
- 3) CATEGORY SHOOTERS: At all tournaments where All-American points will be awarded in any event, shooters may declare only one category (i.e. Lady I, Lady II, Sub-Junior, Junior, Junior Gold, Sub-Veteran, Veteran, or Senior Veteran) Note: Chair shooters are exempt from this rule. Any shooter who is tied for event Champion may shoot-off/carry-over for the Championship trophy. If a shooter fails in the championship trophy shoot-off/carry-over and has declared a special category at the time of classification, the shooter can fall back to the declared category. Any shooter who has declared a special category at the time of classification and whose score qualifies for any trophy in his/her declared category, will compete for the category trophy and not for place, class or yardage group. Any special category shooter, whose score does not qualify for a trophy in his/her category, may compete for place, class or yardage group trophies. Once any declarations have been made either by shooter or shoot management, the declaration is final and cannot be changed. The only exception to this rule will be to correct an ATA classification error. All Ladies I, Ladies II, Sub-Juniors, Juniors, Junior Golds, Sub-Veterans, Veterans and Senior Veterans must declare their special category at the time of classification in any registered tournament if they wish to compete as a category shooter. Without such declaration, the contestant will not be allowed to compete for the applicable category trophy for the duration of the tournament. No contestant will be allowed to declare or change a special declaration after firing his/her first shot. **Failure to declare your classification does not constitute an ATA classification error. Please check your classification receipt before leaving the classification window. There will be no exceptions to this rule other than noted above.**
- 4) Each shooter who is entitled to receive money won during any event agrees that if such money is not received by him/her during the period of this tournament, a check in payment for the money won may be mailed to him/her at the address indicated by ATA records, and when mailed the Club will not be liable in any manner whatsoever for any check lost, stolen, unclaimed, undelivered or otherwise not received by the shooter.
- 5) Shooters who do not have a total of 1000 16 yard targets registered with the ATA in the current and previous year shall be placed in Class B or higher at the discretion of the Classification Committee.
- 6) Shooters who do not have a total of 1,000 doubles targets registered with the ATA in the current and previous year shall be placed in Class B or higher at the discretion of the Classification Committee.
- 7) Assigned yardage applies during this tournament. Shooters not meeting target requirements will be assigned yardage or their handicap card yardage whichever is greater. Target requirements are at least a total of 1000 handicap targets registered with the ATA in the current and previous year. Assigned yardage for Junior, Junior Gold and adult males is 23 yards. Assigned yardage for Lady I, Lady II, Sub-Jr., Sub-Vet, Vet and Sr.Vet. Shooters shall be 20 yards. Known ability may also be applied by the Classification Committee.

- 8) Targets will be set each morning at 7 am or upon daylight according to ATA rules. Targets will only be reset if they have become illegal or in between events.
- 9) The management shall appoint a judge or judges to be called upon for ruling on various matters when the occasion arises. If a judge has not been appointed, the President of the club, or in his absence, the Secretary shall act as judge. The scorer must call upon the judge to settle any controversy regarding a score or when he has made an error by being ahead or behind in his scoring.
- 10) Management will not be responsible for errors in scores after the options have been posted. Shooters should use the electronic bulletin board and the score board to check their scores and notify Shoot Management immediately if a discrepancy is noticed. **SCORES BECOME FINAL ONE HOUR AFTER THE CONCLUSION OF THE EVENT.**

**Sales , Soliciting and Distribution**

No soliciting, selling or distribution of ammunition or any type of goods or wares are allowed on the club premises without the express written permission of the National Shooting Complex. Violators will be removed from the premises. No soliciting will be allowed on the grounds, nor shall any literature of any kind be distributed on the grounds without prior written approval by the ATA and the NSC management.

**Classification**

Shooters are required to have both their 16 yard and doubles average computed for use by the Handicap Committee. The following system will be used whereby shooters will be classified on known ability and their official 16 yard and doubles averages.

**Missing or Withdrawing from an Event**

If you withdraw from an event, you can not re-enter; however, if you miss an event and decide to re-enter, you will be placed back on the same bank that you would have originally shot on.

**Announcement**

This printed program will absolutely govern the tournament. The Amateur Trapshooting Association Rules will govern all points not otherwise provided for. Management reserves the absolute right in its sound discretion, at any time prior to or during this tournament, to change or modify this program in any manner it desires.

**Shoot-Offs**

Contestants will be called, 1<sup>st</sup> call, 2<sup>nd</sup> call and final call for shoot-offs. No response, shooter will forfeit. Pre-Grand event ties may be carried over to subsequent like events at management's discretion.

**Disqualification**

Management reserves the right to refuse any entry or disqualify anyone who interferes with or disturbs the harmony of this shoot in any manner.

**Employment**

In an attempt to hold the best Southwestern Grand ever, we are trying to provide the most qualified help available. If you are interested in pulling/setting or similar tasks, please contact the NSC at 210.688.3371 ext122 at your earliest convenience.

**Hall of Fame Contributor Purse/Award- Event #24 SWG Handicap Championship**


The Trapshooting Hall of Fame maintains a museum at the home grounds in Vandalia, Ohio and provides a research library for the history of our sport. It also awards college scholarships and conducts a youth program to promote the future of trapshooting. Half of the entry in this award is donated to the Hall of Fame. We encourage you to participate and support its various activities.

Classification for 16 yard Events

98% and over .....	AAA
96.25% and under 98% .....	AA
94.75% and under 96.25%.....	A
93% and under 94.75%.....	B
90% and under 93%.....	C
under 90%.....	D

Classification for Doubles Events

96% and over .....	AAA
92% and under 96%.....	AA
89% and under 92%.....	A
86% and under 89%.....	B
82% and under 86%.....	C
Under 82%.....	D

Proudly Made in the U.S.A. 

# MAXTS

TRAP SINGLE



**SIMPLY THE BEST  
SINGLE BARREL  
AVAILABLE AT ANY PRICE**

 **KOLAR**  
*The Mark of Performance*

For more information  
contact Kolar or visit us  
online for the dealer nearest you

**[www.kolararms.com](http://www.kolararms.com)**

1925 Roosevelt Avenue  
Racine, WI 53406 262.554.0800

★  
**ALAMO  
SPORTING ARMS**



**Blaser**

**The New Blaser F3 Trap Gun  
Now available at Alamo Sporting Arms  
Located in Building 27**

**Financing now available. Call for details.  
[www.alamosportingarms.com](http://www.alamosportingarms.com) 210-829-0297**

# Decot

## HY-WYD

SPORT GLASSES, INC.

### *Get the shooter's edge.*

Decot Hy-Wyd Sport Glasses sets the standard for sports eye wear:

- Prescription or nonprescription
- Custom handcrafted frame of high quality spring metal
- Designed to set high or low, away from the face to eliminate perspiration smear
- 40+ lens colors for ultimate target contrast



Call 1-800-529-1901 | Order online [www.sportglasses.com](http://www.sportglasses.com) | E-mail [decot@sportglasses.com](mailto:decot@sportglasses.com)

You'll enjoy the built-in comfort the "REVEL" provides. The wrap design has a closer form fit to the face. It also provides the high fit needed for shooting. The narrow lens design allows for proper ventilation and reduces fogging often associated with other wrap designs.

As with all Decot frame styles, the lenses are interchangeable, and our proven palette of custom lens colors are available.

The REVEL design is offered in two sizes; the standard is 64 and the large is 68. The frame is finished in either Silver or the popular Black non-reflective. (Limited RX availability)

The original and still the best...since 1949. The Sport Glasses of Champions.

# NSC TROPHY PROGRAM

## 2012 S\*UTHWESTERN GRAND Jeff Wagner \* PRESIDENT



Winners of awards provided by the National Shooting Complex will receive an engraved medallion for the event. In addition, following the shoot, these winners will be mailed an awards choice package from which they will choose one award from a selection of 4 trophies and 9 gift cards. Awards selections must be returned to the National Shooting Complex no later than June 1 at which time awards will be mailed to the winners at no cost. A selected display of these items is located in Registration. All ATA provide awards will remain the same as past years. Please pick up NSC Medallions and ATA awards in Registration as they will not be mailed.



# SWG WARM-UP

*These events will be separate from the Southwestern Grand American*

## SATURDAY, APRIL 7, 2012

**Practice Opens 8 am / Event Starting Time 9 am**

### EVENT #1

#### 100 16 YARD TARGETS – 6 CLASSES

Targets and shooter service (Plus ATA & TX Daily Fees)..... \$ 30

#### Options:

1) Lewis Purse – 4 classes (one money each Lewis Class) ..... \$ 10

2) Kids & Clays (RMH) Lewis Purse – 3 classes 50%-K&C Split 60/40 HG ..... \$ 20

#### Trophies:

Champion each Class (AAA, AA, A, B, C, D)

Champion (Lady I, Lady II, Jr Gold, Jr, Sub-Jr., SubVet., Vet., Sr. Vet.)

---

### EVENT #2

#### 100 HANDICAP TARGETS

Targets and shooter service (Plus ATA & TX Daily Fees)..... \$ 30

#### Options:

Yardage Groups (18-21) (22-24) (25-26) (27)

1) \$5 on each 25 (divided 60/40%)..... \$ 20

2) \$10 on each 50 (divided 50/30/20%)..... \$ 30

3) Total 100 (divided 50/30/20%)..... \$ 25

4) Lewis Purse – 4 classes (divided 60/40%) ..... \$ 20

5) Kids & Clays (RMH) Lewis Purse – 3 classes 50%-K&C Split 60/40 HG ..... \$ 20

#### Trophies:

Champion

Yardage Group Champion (4) (18-21) (22-24) (25-26) (27)

Champion (Lady I, Lady II, Jr Gold, Jr, Sub-Jr., SubVet., Vet., Sr. Vet.)

---

### EVENT #3

#### 50 PAIR DOUBLES TARGETS - 6 CLASSES

Targets and shooter service (Plus ATA & TX Daily Fees)..... \$ 30

#### Options:

1) Lewis Purse – 4 classes (one money each Lewis Class) ..... \$ 10

2) Kids & Clays (RMH) Lewis Purse – 3 classes 50%-K&C Split 60/40 HG ..... \$ 20

#### Trophies:

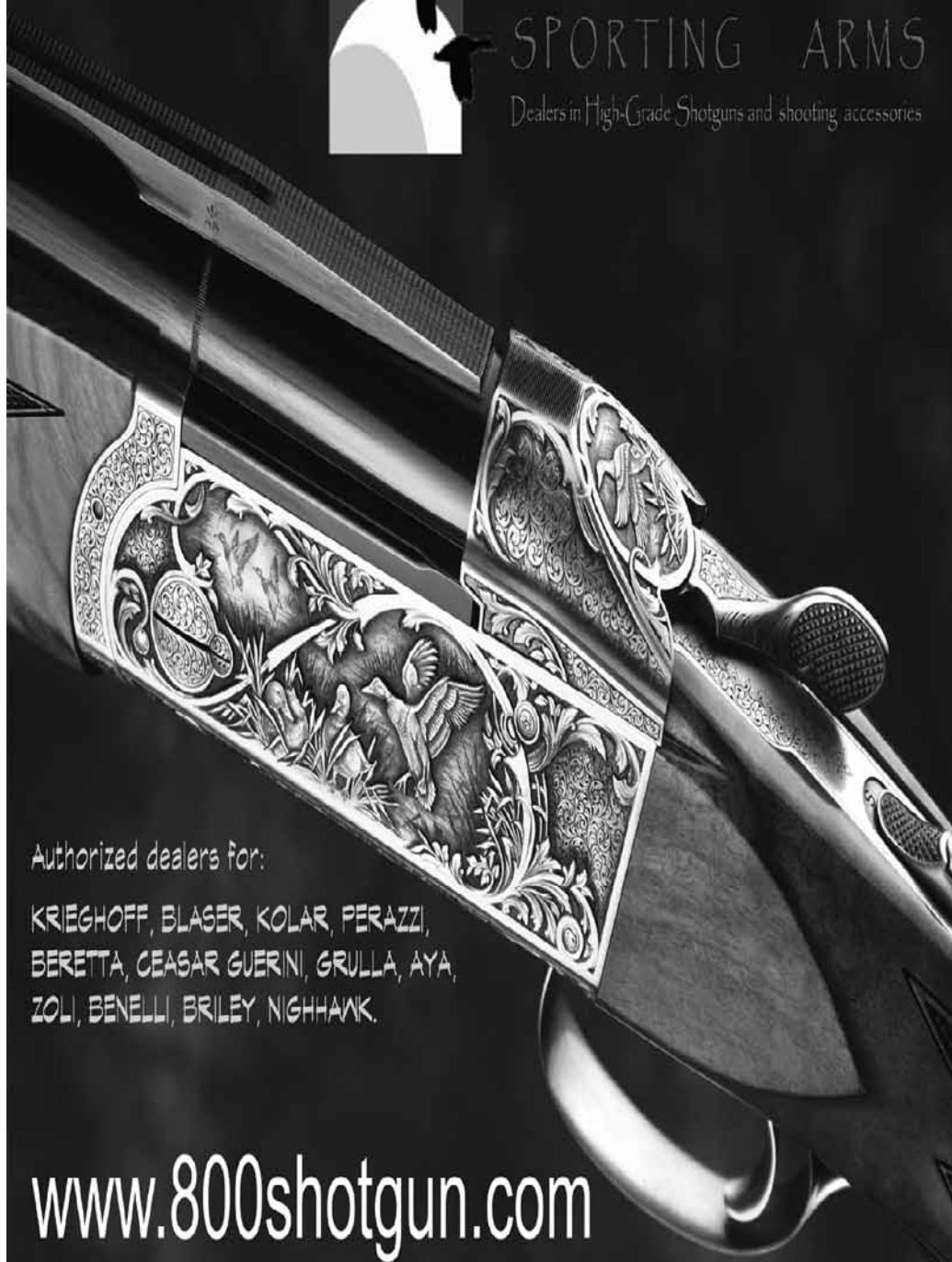
Champion each Class (AAA, AA, A, B, C, D)

Champion (Lady I, Lady II, Jr Gold, Jr, Sub-Jr., SubVet., Vet., Sr. Vet.)



# GREAT LAKES SPORTING ARMS

Dealers in High-Grade Shotguns and shooting accessories



Authorized dealers for:

KRIEGHOFF, BLASER, KOLAR, PERAZZI,  
BERETTA, CEASAR GUERINI, GRULLA, AYA,  
ZOLI, BENELLI, BRILEY, NIGHHAWK.

[www.800shotgun.com](http://www.800shotgun.com)

8585 PGA Drive, Walled Lake Michigan 48390 1-800-SHOTGUN email: [kurt@glssporting.com](mailto:kurt@glssporting.com)

# SUNDAY, APRIL 8, 2012

*Practice Opens 8 am  
Event Starting Time 9 am*

## EVENT #4

### 100 16 YARD TARGETS – 6 CLASSES

Targets and shooter service (Plus ATA & TX Daily Fees) ..... \$ 30

#### Options:

- 1) Lewis Purse – 4 classes (one money each Lewis Class) ..... \$ 10
- 2) Kids & Clays (RMH) Lewis Purse – 3 classes 50%-K&C Split 60/40 HG ..... \$ 20

#### Trophies:

Champion each Class (AAA, AA, A, B, C, D)  
Champion (Lady I, Lady II, Jr Gold, Jr, Sub-Jr., SubVet., Vet., Sr.Vet.)

---

## EVENT #5

### 100 HANDICAP TARGETS

Targets and shooter service (Plus ATA & TX Daily Fees) ..... \$ 30

#### Options:

Yardage Groups (18-21) (22-24) (25-26) (27)

- 1) \$5 on each 25 (divided 60/40%) ..... \$ 20
- 2) \$10 on each 50 (divided 50/30/20%) ..... \$ 30
- 3) Total 100 (divided 50/30/20%) ..... \$ 25
- 4) Lewis Purse – 4 classes (divided 60/40%) ..... \$ 20
- 5) Kids & Clays (RMH) Lewis Purse – 3 classes 50%-K&C Split 60/40 HG ..... \$ 20

#### Trophies:

Champion  
Yardage Group Champion (4) (18-21) (22-24) (25-26) (27)  
Champion (Lady I, Lady II, Jr Gold, Jr, Sub-Jr., SubVet., Vet., Sr.Vet.)

---

## EVENT #6

### 50 PAIR DOUBLES TARGETS – 6 CLASSES

Targets and shooter service (Plus ATA & TX Daily Fees) ..... \$ 30

#### Options:

- 1) Lewis Purse – 4 classes (one money each Lewis Class) ..... \$ 10
- 2) Kids & Clays (RMH) Lewis Purse – 3 classes 50%-K&C Split 60/40 HG ..... \$ 20

#### Trophies:

Champion each Class (AAA, AA, A, B, C, D)  
Champion (Lady I, Lady II, Jr Gold, Jr, Sub-Jr., SubVet., Vet., Sr.Vet.)



**WWW.SPEEDBUMPSTOCKWORKS.COM**

**Ken Rucker's Bump-Buster™ Hydraulic Recoil Reduction System**

Available with or without a pad adjuster in polished aluminum or powder-coated colors

**Ken Rucker's Auto-Buster™ Recoil Reduction System for Semi-Autos**

Complete with pad adjuster in polished aluminum or powder-coated colors

**Jack West Stocks/Pro-Combo Stocks**

Available for Remington 1100, 11/87 and 870 in Black, Carbon Fiber, or Old Glory sets

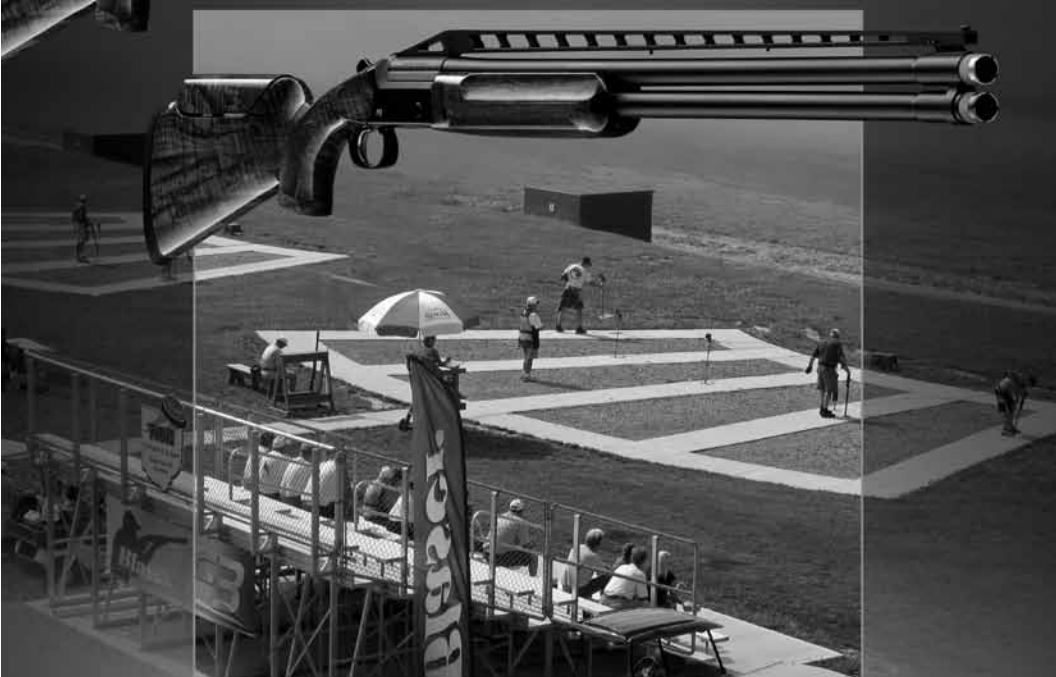
Visit me at my shop for expert installation of my adjustable combs, adjustable pads, buttplates and Kickeez recoil pads. Gun-fitting appointments available.

**Shop/Shipping Address:**

Speedbump Stockworks,  
NSSA/NSCA 5931 Roft Road, Vendor Building #22  
San Antonio, TX 78253

**Contact:**

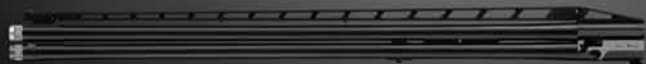
Ken: 903-815-6535; Carolyn: 903-209-5074  
[www.SpeedbumpStockworks.com](http://www.SpeedbumpStockworks.com)



## **FB** SuperTrap Combo



▲ Under-Single barrel (USGL) with adjustable rib



▲ Over & Under barrel (O&U) with adjustable rib

10 Year Warranty  
on all Blaser Guns

[info@blaser-usa.com](mailto:info@blaser-usa.com)  
[www.blaser-usa.com](http://www.blaser-usa.com)

**Blaser**  
Made in Germany

Blaser USA, Inc.  
403 East Ramsey, Suite 301  
San Antonio, TX 78216  
Phone (210) 377 2527  
Fax (210) 377 2533

**RECOGNITION OF OUR TRAP SPONSORS**

**ROBERT TUCKER HAYES**

**BILL & LEEANN MARTIN  
CHILDREN & GRAND CHILDREN**

**CRAIG J. HART**

**RICH KAYSA, NORBERT HAUSSMANN,  
SCOTT EVANS AND REAGAN HOUSTON**

**BOB CRAFT, BOB ROBERTS, P.D. PARKER  
AND WAYNE QUANDT**

**JIM FOSTER, TERRY & PAULA BROGDON,  
JERRY & TRISH O'CONNOR,  
JOE MAX & MARY WALKER  
AND ARNOLD & BOBBIE NIX**

**BROWNING**

**WE EXTEND OUR SINCERE GRATITUDE FOR YOUR  
DEDICATION TO TRAP SHOOTING  
AT THE NATIONAL SHOOTING COMPLEX**

**GARY & KAY SHERROD  
IN MEMORY OF  
LESS LAWSON**

**DON & JANICE WEEKS**

**JOHN HOFFLAND, CHARLIE LONG, JIM HAY,  
GEORGE CUSTER AND MIKE FISHER**

**JACK, NANCY, JAMES AND JOHN ALLEN**

**DANNY THOMASON, BILL & SUE HOPPER,  
CHARLES T. LONG, CHARLES CHAPMAN  
AND RANDY & PAT BOEDING**

**WINCHESTER  
AMMUNITION**

**WE EXTEND OUR SINCERE GRATITUDE FOR YOUR  
DEDICATION TO TRAP SHOOTING  
AT THE NATIONAL SHOOTING COMPLEX**

# BT 99 Drawing

## SATURDAY NIGHT DRAWINGS

BT 99 and 3 flats of ammo sponsored by National Shooting Complex. All shooters entered in Monday-Thursday, events 7-18, will have their name entered once for each event shot. Enter all 12 events and you will receive 3 additional bonus entries. Drawings will be held during the Saturday evening party.



**Obar  
catering**

National Shooting Complex on site Caterer!

- Open for breakfast, lunch and dinner
- Homemade dessert with ice cream

**Check out our dinner specials!**



# MONDAY, APRIL 9, 2012

Practice Opens 8 am / Event Starting Time 9 am

## EVENT #7

### 100 16 YARD TARGETS – 6 CLASSES

Targets and shooter service (Plus ATA & TX Daily Fees)..... \$ 31

#### Options:

- 1) \$10 on each 50 (divided 60/40% each class) ..... \$ 20
- 2) \$10 on total (divided 60/40% each class)..... \$ 10
- 3) Lewis Purse – 4 classes (one money each Lewis Class) ..... \$ 20
- 4) Kids & Clays (RMH) Lewis Purse – 3 classes 50%-K&C Split 60/40 HG ..... \$ 20

#### Trophies:

Champion  
Champion each Class (AAA, AA, A, B, C, D)  
Champion (Lady I, Lady II, Jr Gold, Jr, Sub-Jr., SubVet., Vet., Sr.Vet.)

---

## EVENT #8

### 100 HANDICAP TARGETS

Targets and shooter service (Plus ATA & TX Daily Fees)..... \$ 31

#### Options:

Yardage Groups (18-21) (22-24) (25-26) (27)

- 1) \$5 on each 25 (divided 60/40%)..... \$ 20
- 2) \$10 on each 50 (divided 50/30/20%)..... \$ 30
- 3) Total 100 (divided 50/30/20%)..... \$ 25
- 4) Jackpot Purse (divided 40/30/20/10%) ..... \$ 50
- 5) Yardage Purse (divided 50/30/20%) ..... \$ 20
- 6) Lewis Purse – 4 classes (divided 60/40%) ..... \$ 20
- 5) Kids & Clays (RMH) Lewis Purse – 3 classes 50%-K&C Split 60/40 HG ..... \$ 20

#### Trophies:

Champion  
Yardage Group Champion (18-21) (22-24) (25-26) (27)  
Champion (Lady I, Lady II, Jr Gold, Jr, Sub-Jr., SubVet., Vet., Sr.Vet.)

---

## EVENT #9

### 50 PAIR DOUBLES TARGETS – 6 CLASSES

Targets and shooter service (Plus ATA & TX Daily Fees)..... \$ 31

#### Options:

- 1) \$10 on each 50 (divided 60/40% each class) ..... \$ 20
- 2) \$10 on total (divided 60/40% each class)..... \$ 10
- 3) Lewis Purse – 4 classes (one money each Lewis Class) ..... \$ 20
- 4) Kids & Clays (RMH) Lewis Purse – 3 classes 50%-K&C Split 60/40 HG ..... \$ 20

#### Trophies:

Champion  
Champion each Class (AAA, AA, A, B, C, D)  
Champion (Lady I, Lady II, Jr Gold, Jr, Sub-Jr., SubVet., Vet., Sr.Vet.)

# TUESDAY, APRIL 10, 2012

Practice Opens 8 am / Event Starting Time 9 am

## EVENT #10

### DAVID KELLY - 100 16 YARD TARGETS – 6 CLASSES

Targets and shooter service (Plus ATA & TX Daily Fees) .....\$31

#### Options:

- 1) \$10 on each 50 (divided 60/40% each class) ..... \$ 20
- 2) \$10 on total (divided 60/40% each class) ..... \$ 10
- 3) Lewis Purse – 4 classes (one money each Lewis Class) ..... \$ 20
- 4) Kids & Clays (RMH) Lewis Purse – 3 classes 50%-K&C Split 60/40 HG ..... \$ 20

#### Trophies:

Champion

Champion each Class (AAA,AA,A, B, C, D)

Champion (Lady I, Lady II, Jr Gold, Jr, Sub-Jr., SubVet., Vet., Sr.Vet.)

---

## EVENT #11

### LEO HARRISON III - 100 HANDICAP TARGETS

Targets and shooter service (Plus ATA & TX Daily Fees) ..... \$ 31

#### Options:

Yardage Groups (18-21) (22-24) (25-26) (27)

- 1) \$5 on each 25 (divided 60/40%) ..... \$ 20
- 2) \$10 on each 50 (divided 50/30/20%) ..... \$ 30
- 3) Total 100 (divided 50/30/20%) ..... \$ 25
- 4) Jackpot Purse (divided 40/30/20/10%) ..... \$ 50
- 5) Yardage Purse (divided 50/30/20%) ..... \$ 20
- 6) Lewis Purse – 4 classes (divided 60/40%) ..... \$ 20
- 7) Kids & Clays (RMH) Lewis Purse – 3 classes 50%-K&C Split 60/40 HG ..... \$ 20

#### Trophies:

Champion

Yardage Group Champion (18-21) (22-24) (25-26) (27)

Champion (Lady I, Lady II, Jr Gold, Jr, Sub-Jr., SubVet., Vet., Sr.Vet.)

---

## EVENT #12

### HARLAN CAMPBELL JR - 50 PAIR DOUBLES TARGETS – 6 CLASSES

Targets and shooter service (Plus ATA & TX Daily Fees) ..... \$ 31

#### Options:

- 1) \$10 on each 50 (divided 60/40% each class) ..... \$ 20
- 2) \$10 on total (divided 60/40% each class) ..... \$ 10
- 3) Lewis Purse – 4 classes (one money each Lewis Class) ..... \$ 20
- 4) Kids & Clays (RMH) Lewis Purse – 3 classes 50%-K&C Split 60/40 HG ..... \$ 20

#### Trophies:

Champion

Champion each Class (AAA,AA,A, B, C, D)

Champion (Lady I, Lady II, Jr Gold, Jr, Sub-Jr., SubVet., Vet., Sr.Vet.)

# WEDNESDAY, APRIL 11, 2012

Practice Opens 8 am / Event Starting Time 9 am



## EVENT #13

### FIOCCHI USA 100 – 16 YARD TARGETS – 6 CLASSES

Targets and shooter service (Plus ATA & TX Daily Fees) ..... \$ 31

#### Options:

- 1) \$10 on each 50 (divided 60/40% each class) ..... \$ 20
- 2) \$10 on total (divided 60/40% each class) ..... \$ 10
- 3) Lewis Purse – 4 classes (one money each Lewis Class) ..... \$ 20
- 4) Kids & Clays (RMH) Lewis Purse – 3 classes 50%-K&C Split 60/40 HG ..... \$ 20

#### Trophies:

Champion  
Champion each Class (AAA, AA, A, B, C, D)  
Champion (Lady I, Lady II, Jr Gold, Jr, Sub-Jr., SubVet., Vet., Sr. Vet.)



## EVENT #14

### KOLAR 100 HANDICAP TARGETS

Targets and shooter service (Plus ATA & TX Daily Fees) ..... \$ 31

#### Options:

Yardage Groups (18-21) (22-24) (25-26) (27)

- 1) \$5 on each 25 (divided 60/40%) ..... \$ 20
- 2) \$10 on each 50 (divided 50/30/20%) ..... \$ 30
- 3) Total 100 (divided 50/30/20%) ..... \$ 25
- 4) Jackpot Purse (divided 40/30/20/10%) ..... \$ 50
- 5) Yardage Purse (divided 50/30/20%) ..... \$ 20
- 6) Lewis Purse – 4 classes (divided 60/40%) ..... \$ 20
- 7) Kids & Clays (RMH) Lewis Purse – 3 classes 50%-K&C Split 60/40 HG ..... \$ 20

#### Trophies:

Champion  
Yardage Group Champion (18-21) (22-24) (25-26) (27)  
Champion (Lady I, Lady II, Jr Gold, Jr, Sub-Jr., SubVet., Vet., Sr. Vet.)

# WEDNESDAY Continued

## BRILEY EVENT #15

### BRILEY 50 PAIR DOUBLES TARGETS - 6 CLASSES

Targets and shooter service (Plus ATA & TX Daily Fees) ..... \$ 31

#### Options:

- 1) \$10 on each 50 (divided 60/40% each class) ..... \$ 20
- 2) \$10 on total (divided 60/40% each class) ..... \$ 10
- 3) Lewis Purse – 4 classes (one money each Lewis Class) ..... \$ 20
- 4) Kids & Clays (RMH) Lewis Purse – 3 classes 50%-K&C Split 60/40 HG ..... \$ 20

#### Trophies:

Champion  
Champion each Class (AAA, AA, A, B, C, D)  
Champion (Lady I, Lady II, Jr Gold, Jr, Sub-Jr., Sub-Vet., Vet., Sr.Vet.)



# BRILEY

*A Legacy of Shooting Innovation*

Welcome to the  
2012 Southwestern Grand

The Briley booth on Vendor Row  
will be open during the shoot.

[www.briley.com](http://www.briley.com) 1-800-331-5718



# THURSDAY, APRIL 12, 2012

*Practice Opens 8 am*  
*Event Starting Time 9 am*

*Decot Hy~Wyd*  
Sport Glasses Inc.

## EVENT #16

### DECOT SHOOTING GLASSES 100 – 16 YARD TARGETS – 6 CLASSES

Targets and shooter service (Plus ATA & TX Daily Fees) ..... \$ 31

#### Options:

- 1) \$10 on each 50 (divided 60/40% each class) ..... \$ 20
- 2) \$10 on total (divided 60/40% each class) ..... \$ 10
- 3) Lewis Purse – 4 classes (one money each Lewis Class) ..... \$ 20
- 4) Kids & Clays (RMH) Lewis Purse – 3 classes 50%-K&C Split 60/40 HG ..... \$ 20

#### Trophies:

Champion  
Class Champion/Runner-up (AAA, AA, A, B, C, D)  
Champion/Runner-up (Lady I, Lady II, Jr Gold, Jr, Sub-Jr., SubVet., Vet., Sr.Vet.)

Perazzi

## EVENT #17

### PERAZZI 100 HANDICAP TARGETS

Targets and shooter service (Plus ATA & TX Daily Fees) ..... \$31

#### Options:

Yardage Groups (18-21) (22-24) (25-26) (27)

- 1) \$5 on each 25 (divided 60/40%) ..... \$ 20
- 2) \$10 on each 50 (divided 50/30/20%) ..... \$ 30
- 3) Total 100 (divided 50/30/20%) ..... \$ 25
- 4) Jackpot Purse (divided 40/30/20/10%) ..... \$ 50
- 5) Yardage Purse (divided 50/30/20%) ..... \$ 20
- 6) Lewis Purse – 4 classes (divided 60/40%) ..... \$ 20
- 7) Kids & Clays (RMH) Lewis Purse – 3 classes 50%-K&C Split 60/40 HG ..... \$ 20

#### Trophies:

Champion/Runner-up  
Yardage Group Champion/Runner-up (18-21) (22-24) (25-26) (27)  
Champion/Runner-up (Lady I, Lady II, Jr Gold, Jr, Sub-Jr., SubVet., Vet., Sr.Vet.)

# THURSDAY Continued



## EVENT #18

### SPEEDBUMP STOCKWORKS 50 PAIR DOUBLES TARGETS – 6 CLASSES

Targets and shooter service (Plus ATA & TX Daily Fees)..... \$ 31

#### Options:

- 1 ) \$10 on each 50 (divided 60/40% each class) ..... \$ 20
- 2 ) \$10 on total (divided 60/40% each class)..... \$ 10
- 3 ) Lewis Purse – 4 classes (one money each Lewis Class) ..... \$ 20
- 4 ) Kids & Clays (RMH) Lewis Purse – 3 classes 50%-K&C Split 60/40 HG ..... \$ 20

#### Trophies:

Champion

Class Champion/Runner-up (AAA, AA, A, B, C, D)

Champion/Runner-up (Lady I, Lady II, Jr Gold, Jr, Sub-Jr., Sub-Vet., Vet., Sr.Vet.)

AMERICAN TRAP, SKEET & INTERNATIONAL TARGETS

A SHOOTING  
TRADITION  
SINCE 1892 . . .



**WHITE FLYER TARGETS**

DIVISION OF REAGENT CHEMICAL & RESEARCH, INC.

For the name of your nearest White Flyer Distributor call:  
East 800-423-6077 Central 800-647-2898 West 800-872-7888

# FRIDAY, APRIL 13, 2012

Practice Opens 8 am / Event Starting Time 9 am



## EVENT #19

### RIO SINGLES CLASS CHAMPIONSHIP

### 100 - 16 YARD TARGETS - 6 CLASSES

Targets and shooter service (Plus ATA & TX Daily Fees)..... \$ 31

#### Options:

- 1) \$10 on each 50 (divided 60/40% each class) ..... \$ 20
- 2) \$10 on total (divided 60/40% each class) ..... \$ 10
- 3) Lewis Purse – 4 classes (one money each Lewis Class) ..... \$ 20
- 4) Kids & Clays (RMH) Lewis Purse – 3 classes 50%-K&C Split 60/40 HG ..... \$ 20

#### ATA Trophies:

Class Champion/Runner-up (AAA, AA, A, B, C, D)

Champion/Runner-up (Lady I, Lady II, Jr Gold, Jr, Sub-Jr., SubVet., Vet., Sr. Vet.)

---



## EVENT #20

### REMINGTON NIRTO 27 100 HANDICAP TARGETS

Targets and shooter service (Plus ATA & TX Daily Fees)..... \$ 31

#### Options:

Yardage Groups (18-21) (22-24) (25-26) (27)

- 1) \$5 on each 25 (divided 60/40%) ..... \$ 20
- 2) \$10 on each 50 (divided 50/30/20%) ..... \$ 30
- 3) Total 100 (divided 50/30/20%) ..... \$ 25
- 4) Jackpot Purse (divided 40/30/20/10%) ..... \$ 50
- 5) Yardage Purse (divided 50/30/20%) ..... \$ 20
- 6) Lewis Purse – 4 classes (divided 60/40%) ..... \$ 20
- 7) Wolf Purse – total 200 (divided 50/30/20%) Events 20 & 24 ..... \$ 50
- 8) Kids & Clays (RMH) Lewis Purse – 3 classes 50%-K&C Split 60/40 HG ..... \$ 20

#### ATA Trophies:

Champion, Runner-up, Third, Fourth, Fifth

Yardage Group Champion/Runner-up (18-21) (22-24) (25-26) (27)

Champion/Runner-up (Lady I, Lady II, Jr Gold, Jr, Sub-Jr., SubVet., Vet., Sr. Vet.)

---



## EVENT #21

### Browning 50 Pair Doubles Targets

Targets and shooter service (Plus ATA & TX Daily Fees)..... \$ 31

#### Options:

- 1) \$10 on each 50 (divided 60/40% each class) ..... \$ 20
- 2) Total 100 (divided 60/40% each class) ..... \$ 10
- 3) Lewis Purse – 4 classes (one money each Lewis Class) ..... \$ 20

#### ATA Trophies:

Class Champion/Runner-up (AAA, AA, A, B, C, D)

Champion/Runner-up (Lady I, Lady II, Jr Gold, Jr, Sub-Jr., SubVet., Vet., Sr. Vet.)

# CANNED HEAT

## A TRUE PAIR



The most advanced training aid for Trap, Skeet and Sporting Clay Shooters alike "see where you are missing." The Focchi Chemical Tracer powered by Cyalume, provides a daytime visible trace that travels with the cloud of shot as it hits or misses the clay bird. The Chemical Tracer is non-incendiary, non-toxic, non-corrosive and leaves no residue in the barrel. The 12 Gauge 3/4 oz. #8 shot + Cyalume Tracer Load is light sensitive and will therefore soon be packaged as part of the New and Innovative Focchi 'Canned Heat' Line.

The Focchi Chemical Tracer "see where you are missing."



**CYALUME**  
Light Technology

SINCE 1876

**FIOCCHI**  
AMMUNITION

For the Focchi dealer near you, Call 417.449.1043 / visit [www.focchiusa.com](http://www.focchiusa.com)



**BROWNING** BT-99 GOLDEN CLAYS  
CITORI XT TRAP GOLD

# BT-99 & CITORI®

Dust 'em all with an over and under Citori XT Trap Gold or timeless BT-99 Golden Clays. Feel the solid hand-fitted precision built into the machined steel receivers. With full-width locking lugs, the Citori and BT-99 will wear in, not out. Enjoy the attention to detail displayed in the magnificent gold-accented engravings. The adjustable combs, GraCoil recoil reduction systems, back-bored ported barrels with Invector-Plus™ choke tubes and high-post ribs combine to maximize your performance on the trap field.

When you're ready to shoot for the gold, you're ready for the Browning Citori and BT-99.

[browning.com](http://browning.com)



THE GOLD STANDARD IN  
TRAP SHOTGUNS. PERIOD.



**BROWNING**®

The Best There Is

**GOOD LUCK  
SHOOTERS!**





Trapshooting is all about concentration and the relentless drive to compete. After a successful round, every shooter knows the

unforgettable smell of a freshly shot, Gold Medal® paper shell. It's a smell that reminds them that on the range, "life is good."

THE SMELL OF SUCCESS



FEDERAL  
PREMIUM  
AMMUNITION

WWW.FEDERALPREMIUM.COM

# SATURDAY, APRIL 14, 2012

Practice Opens 8 am/Event Starting Time 9 am



## EVENT #22

**SOUTHWESTERN GRAND AMERICAN WHITE FLYER SINGLES CHAMPIONSHIP**

200 – 16 Yard Targets – 6 Classes

Rotate between 100s

Targets and shooter service (Plus ATA & TX Daily Fees)..... \$ 62

### Options:

- 1) \$5 on each 50 (divided 60/40% each class)..... \$ 20
- 2) \$10 on each 100 (divided 60/40% each class)..... \$ 20
- 3) \$10 on total 200 (divided 50/30/20% each class)..... \$ 20
- 4) Lewis Purse – 4 classes (one money each Lewis Class - Total 200)..... \$ 20
- 5) Kids & Clays (RMH) Lewis Purse – 3 classes 50%-K&C Split 60/40 HG ..... \$ 20

### ATA Trophies:

Champion/Runner-up

Class Champion/Runner-up (AAA, AA, A, B, C, D)

Champion/Runner-up (Lady I, Lady II, Jr Gold, Jr, Sub-Jr., SubVet., Vet., Sr.Vet.)

Champion Wheelchair Shooter

# CHAMPIONSHIP PARTY

**SATURDAY, APRIL 14**

**6:30 - 9:30 PM**

**MUSIC**

**DINNER**

**COCKTAILS**

**FREE FOR ALL COMPETITORS & THEIR GUESTS.**



The Texas Trapshooters Association  
Cordially invites you to the 2012

**Texas State Shoot**  
**July 3-8, 2012**

**National Shooting Complex**

5931 Roft Road, San Antonio, TX 78253

210-688-3371

**\$30,000 in**  
**Trophies and Added Money!**

**18 Henry Golden Boys**  
**All Open Trophies & Engraved**  
**w/ the 2012 Texas Logo!**

**1400 Targets**  
**Special Event Party**  
**Saturday Night!**



# DON'T MISS OUT!

*12 issues/year of trapshooting,  
competition and camaraderie!*

## **TRAP&FIELD®**

*The official magazine of the ATA*

1100 Waterway Blvd. • Indianapolis, IN 46202

317-633-8800

*www.trapandfield.com*



	C	L	A	S	C
TUCKER JOHN	96				NF
FAIRMAN JR EARL J	95				PA
LINGER DONALD R	94	NH			S.U
QUANDEL JR JAMES W	93	PA			UEI
SAGNER CHARLES H	93	PA			UEI
MORELAND ALVIN R	93	MI			S.U
LOVELL R BRUCE	92	IN			UEI
DYKSTRA MARLAN	91	MI			S.U
BONIN DONALD H	91	PA			UEI

(C) 2011 R. J. STUART

# SUNDAY, APRIL 15, 2012

Practice Opens 8 am / Event Starting Time 9 am



FEDERAL<sup>®</sup>  
AMMUNITION

## EVENT #23

**SOUTHWESTERN GRAND AMERICAN**

**FEDERAL DOUBLES CHAMPIONSHIP**

**50 PAIR – 6 CLASSES**

Targets and shooter service (Plus ATA & TX Daily Fees)..... \$ 31

### Options:

- 1) \$10 on each 50 (divided 60/40% each class)..... \$ 20
- 2) \$10 on total (divided 60/40% each class)..... \$ 10
- 3) Lewis Purse – 4 classes (one money each Lewis Class) ..... \$ 20
- 4) Kids & Clays (RMH) Lewis Purse – 3 classes 50%-K&C Split 60/40 HG ..... \$ 20

### ATA Trophies:

Champion/Runner-up

Class Champion/Runner-up (AAA, AA, A, B, C, D)

Champion/Runner-up (Lady I, Lady II, Jr Gold, Jr, Sub-Jr., Sub Vet., Vet., Sr. Vet.)

Champion Wheelchair Shooter



WINCHESTER<sup>®</sup>  
AMMUNITION

## EVENT #24

**SOUTHWESTERN GRAND AMERICAN**

**WINCHESTER HANDICAP CHAMPIONSHIP**

**100 HANDICAP TARGETS**

Targets and shooter service (Plus ATA & TX Daily Fees)..... \$ 31

### Options:

Yardage Groups (18-21) (22-24) (25-26) (27)

- 1) \$5 on each 25 (divided 60/40%)..... \$ 20
- 2) \$10 on each 50 (divided 50/30/20%)..... \$ 30
- 3) Total 100 (divided 50/30/20%)..... \$ 25
- 4) Jackpot Purse (divided 40/30/20/10%) ..... \$ 50
- 5) Yardage Purse (divided 50/30/20%) ..... \$ 20
- 6) Lewis Purse – 4 classes (divided 60/40%) ..... \$ 20
- 7) HOF Purse – 4 classes (divided 60/40%) ..... \$ 20
- 8) Kids & Clays (RMH) Lewis Purse – 3 classes 50%-K&C Split 60/40 HG ..... \$ 20

### ATA Trophies:

Champion, Runner-up, Third, Fourth, Fifth, Sixth, Seventh

Yardage Group Champion/Runner-up (18-21) (22-24) (25-26) (27)

Champion/Runner-up (Lady I, Lady II, Jr Gold, Jr, Sub-Jr., Sub Vet., Vet., Sr. Vet.)

Champion Wheelchair Shooter

# SOUTHWESTERN GRAND ALL-AROUND

400 Targets – Events 22, 23 & 24 Event 22 class governs

**Blaser**

## ATA Trophies:

Champion

Class Champion (AAA, AA, A, B, C, D)

Champion (Lady I, Lady II, Jr Gold, Jr, Sub-Jr., Sub Vet., Vet., Sr. Vet.)

Champion Wheelchair Shooter

---

# SOUTHWESTERN GRAND HIGH OVER-ALL

1300 Targets - Events 13 thru 24, Event 13 class governs

**WHITE FLYER**  
TARGETS •

## ATA Trophies:

Champion

Class Champion (AAA, AA, A, B, C, D)

Champion (Lady I, Lady II, Jr Gold, Jr, Sub-Jr., Sub Vet., Vet., Sr. Vet.)

**TTA**  
**ZONE V**  
**CHAMPIONSHIP**

**SEPT.**  
**14-16**  
**2012**

Hosted By:

 **National  
Shooting  
Complex**  
*San Antonio, TX*

**800**  
**TARGETS**

5931 Roft Road, San Antonio, TX 78253

210-688-3371

[www.nationalshootingcomplex.com](http://www.nationalshootingcomplex.com)

# Lend a Helping Hand...

**S**ign up today  
for the Lewis Class  
Option event for the Kids & Clays®  
Foundation benefiting Ronald  
McDonald House Charities®.

Your support will help  
thousands of families  
of sick and injured  
children like ours.

**Kids & Clays**

Benefiting Ronald McDonald House Charities®

Proud to be the Official Charity of



RONALD McDONALD  
HOUSE CHARITIES

[www.KidsAndClays.com](http://www.KidsAndClays.com)



The Truth Is Out There.

ROSWELL  
SHOOTING CLUB

**HODGDON**  
THE COMPANY THAT  
BROUGHT YOU THE  
ORIGINAL **CLAYS**  
CLEAN BURNING POWDER





# Sleep Inn & Suites

Near Sea World San Antonio, TX

143 Richland Hills Drive  
San Antonio, TX 78245  
(210) 670-2500

The Sleep Inn & Suites® near Seaworld is conveniently located, offering easy access to Interstate 410, State Highway 151 and Interstate 10. This San Antonio, TX hotel is just minutes from SeaWorld San Antonio marine park, Lackland Air Force Base (Lackland AFB) and the University of Texas at San Antonio (UTSA).

Additional San Antonio attractions and landmarks within 20 miles include:

- Six Flags Fiesta Texas theme park
- San Antonio Zoo and Aquarium
- San Antonio River Walk
- San Antonio International Airport

Enjoy the great outdoors in San Antonio, with a variety of activities like hiking, biking, golfing, boating, fishing and much more. Many historical landmarks, museums, cultural attractions and shopping centers can be found around town. Nearby restaurants range from family friendly to fast food, including several within walking distance.

This San Antonio, TX hotel offers many little extras and amenities, including:

- Free hot breakfast
- Free wireless high-speed Internet access
- Exercise room
- Indoor pool & Spa(Heated)
- 24-hour coffee and tea
- Meeting Room(40 to 50 people capacity)
- Business Center

Business travelers will welcome additional conveniences like in-room desks, meeting facilities, and access to copy and fax services.

In addition to standard amenities, all of our spacious guest rooms come equipped with microwaves, coffee makers, refrigerators, hair dryers, irons, ironing boards and flat-screen televisions. Some rooms feature sofa sleepers. Non-smoking and handicap accessible rooms can be requested. Laundry facilities and valet cleaning services are both offered on the premises for added guest convenience.

Whether traveling for business or vacationing with the family, the Sleep Inn & Suites near Seaworld in San Antonio offers you a convenient location, affordable rates and service with a smile. We look forward to having you as our guest and making your stay memorable.

A good night's sleep does not have to be bland,  
stay at the Fairfield & make it

**GRAND!**



**Fairfield Inn & Suites**

Sea World Westover Hills

4026 Wiseman Blvd.  
San Antonio, TX 78251

210-682-6800

[www.marriott.com/satsw](http://www.marriott.com/satsw)

\*Call for additional rates for other upcoming 2012 tournaments\*

- Closest Hotel to the Complex
- Complimentary Deluxe Continental Breakfast
- Microwaves & Refrigerators in Every Room
- Complimentary Shuttle to the Complex (based on availability)

**ATA Southwestern Grand Rates**  
**\$69 King, \$79 Queen**

Staying at the best Courtyard  
in the WORLD

**GOOD LUCK AT THE SOUTHWESTERN GRAND!**



**Courtyard by Marriott**

Sea World Westover Hills

11605 State HWY. 151  
San Antonio, TX 78251

210-509-3700

[www.marriott.com/satcw](http://www.marriott.com/satcw)

\*Call for additional rates for other upcoming 2012 tournaments\*

- Closest Hotel to the Complex
- Happy Hour in the Lobby Lounge (M-F)
- Heated Indoor/Outdoor Resort Style Pool
- The Bistro serves Starbucks, Breakfast, Lunch & Dinner Daily

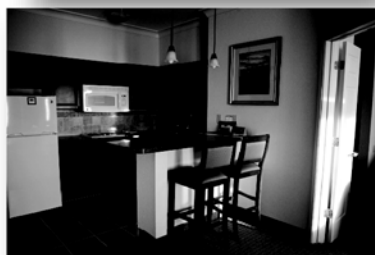
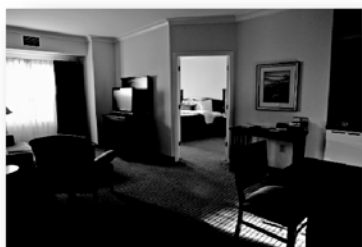
**ATA Southwestern Grand Rates**  
**\$89 King, \$89 Queen**



**NEW! Staybridge Suites Sea World**  
Only 5 miles away from the National Shooting Complex

Make yourself at home here and experience the comfort that really can make all the difference:

- Spacious studio, 1-bedroom and 2-bedroom
- Full Kitchen in every suite
- Complimentary breakfast buffet
- Evening Sundowner Receptions
- Free Wireless Anywhere
- BridgeMart® convenience store
- 24-hour fitness center
- Business center
- Swimming pool
- BBQ grills and pavilion
- Free laundry facilities
- Free local phone calls



**Special rates for ATA Southwestern Grand Rates:**

\$89.00 Studio Suites  
\$109.00 1 Bedroom Suites  
\$179.00 2 Bedroom Suites

For Reservations and availability contact us  
at our toll free number 1-866-922-2054

10919 Town Center Drive  
San Antonio, TX 78251  
Ph 210-767-1100 Fax 210-767-1112  
[www.staybridge.com/sbsseaworld](http://www.staybridge.com/sbsseaworld)

# M<sup>★</sup> HOTEL

Clean. Comfortable. Affordable.

M-STAR HOTEL SAN ANTONIO SEAWORLD

6360 NW LOOP 410  
SAN ANTONIO, TX 78238  
FAX: 210-681-8118



**SPECIAL RATE**  
\$45 Single  
\$55 Double

For reservations please call and mention this ad

- Microwave and Microfridge in rooms
- Guest Laundry Available
- New Re-Modeled Rooms
- Free Continental Breakfast
- Free Cable with HBO
- Free Local Calls
- Free Highspeed Internet
- Outdoor Swimming Pool
- Hair Dryers in all rooms
- Iron & Ironing Board in all rooms
- Safe Available in all rooms
- 15 Minutes from the Gun Club

WWW.MSTARSEAWORLD.COM

 **(210) 647-8000**

## MICRÔTEL<sup>®</sup> INN & SUITES BY WYNDHAM SeaWorld

1605 West Loop 1604 South  
San Antonio, TX 78245  
(210) 255-8608



**Special NSCA  
Rates  
from \$79!  
NOW  
OPEN!**

- Located 7 miles from the National Shooting Complex
- Complimentary managers' reception with beer and wine every evening
- Complimentary shuttle to and from the Gun Club
- Complimentary hot continental breakfast
- Complimentary local and long-distance phone calls anywhere in the US
- Business Center available
- Fitness Center available
- Daily housekeeping service
- Outdoor swimming pool with BBQ area
- Onsite guest laundry facilities

**WYNDHAM**  
HOTEL GROUP

*A member of the Wyndham Hotel Group.  
Earn Wyndham Reward Points for Stays.*

# HYATT REGENCY HILL COUNTRY RESORT AND SPA

9800 Hyatt Resort Drive • San Antonio, Texas 78251 • (210) 647-1234

## From \$133.00 per night

Complimentary Internet & Breakfast

### Hotel Overview:

Step into a world of timeless charm at Hyatt Regency Hill Country Resort and Spa. Building upon our heritage as Rogers - Wiseman Ranch, our casually-luxurious San Antonio Texas resort is the perfect blend of AAA Four Diamond pampering in an inviting setting. Delight in the exquisite amenities of our San Antonio resort hotel - including 27 holes of championship golf, our world-class Windflower spa and four-acre water park. Take in the view of the incredible landscape throughout this historic area.

### Hotel Features:

- 500 luxuriously comfortable rooms.
- 5 restaurants plus Charlie's Long Bar. The longest copper-topped bar in Texas.
- 950-foot Ramblin River, 5 swimming pools and luxury cabanas with 32 HDTV and Wi-Fi Internet Access
- 27-hole Arthur Hills Designed Hill Country Golf Club, with abbreviated 9-hole Family Express Golf Course & Driving Range
- World-class Windflower Hill Country Spa, full-service spa and salon incorporating natural and holistic-infused treatments
- Highest-ranking family resort in San Antonio in 2011 T&L World's Best Reader's Poll
- Full service Health Club



# QUALITY INN SEA WORLD

1.800.4CHOICE

choicehotels.com



323 SW Loop 410  
San Antonio, TX 78245  
Phone: 210.798.9900  
Fax: 210.798.1226

Rates Starting At  
\$69.99/King  
\$69.99/2 Queen  
Suites Available  
\$99.99/King  
\$99.99/2 Queen

## *Closest Hotel to the Complex!*

### Room Choices

- \* One & Two Room Suites
- \* Whirlpool Rooms
- \* Executive King Rooms
- \* Family Connecting Rooms

### In Each Room

- \* Coffee Maker
- \* Hair Dryer
- \* Iron and Ironing Board
- \* Micro/Fridge Units
- \* Safes
- \* Cable with Showtime, CNN & ESPN
- \* High Speed Internet Access

### Hotel Features

- \* Brand New Facility
- \* Outdoor Swimming Pool
- \* Free Breakfast Bar
- \* 60 Spacious Guest Rooms
- \* Meeting Rooms 8-10 People



**Holiday Inn**

Northwest/SeaWorld Area  
10135 State Highway 151  
San Antonio, TX 78251  
www.holidayinn.com/sanantonionhw

### SW GRAND RATE

\$99.00 + tax single/double -standard room  
\$109.00 + tax single/double -executive room  
(GROUP CODE ATA)

For Reservations call

210-520-2508 or 800-HOLIDAY





Alamo Ranch Marketplace

WELCOMES  
participants in the

# ATA Southwestern Grand Trap Shoot

Stop by for breakfast, lunch  
or dinner Chick-fil-A® at  
Alamo Ranch Marketplace

(Corner of 1604 and FM 471 in front of Super Target)



Open 6 a.m. - 10 p.m. daily  
Closed on Sunday

5615 West Loop 1604 N  
San Antonio, TX 78253  
210-647-3090



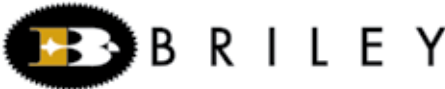
Search:  
Chick-fil-A at Alamo Ranch Marketplace

[www.chick-fil-a.com/alamoranchmarketplace](http://www.chick-fil-a.com/alamoranchmarketplace)



# Thank you to our 2012 Sponsors!

*Decot Hy-Wyd*  
Sport Glasses Inc.



# WINCHESTER



## Earn Up To \$100.00 On All AA<sup>®</sup> Purchases And A Chance To Shoot With Kim Rhode!

For a limited time, earn \$2.00 for each box of AA Target loads you purchase. Minimum 10 Boxes (\$20.00) and Maximum 50 Boxes (\$100.00).

Enter to win an opportunity to train for a day with four-time Olympic medalist, Kim Rhode! Just scan the tag or go to Winchester.com between April 1, 2012 and October 31, 2012 to enter.



# It Pays To Shoot AA!



Rebate offer is valid on qualifying purchases made between April 1, 2012 and October 31, 2012. Offer expires and all requests must be received by November 15, 2012.

Rebate offer is limited to one offer per household. Rebate offer valid in the U.S. and Canada. Void where prohibited by law. For full promotion details, visit a Winchester Ammunition retailer or visit Winchester.com.

Contest drawing is void where prohibited by law and excluded in Florida, New York and Rhode Island. Visit Winchester.com for full contest drawing details and official contest rules.

[www.winchester.com](http://www.winchester.com)

©2012 Winchester Ammunition.



Scan To Enter For A Chance To Win

Get The Free Tag Reader At <http://gettag.mobi>